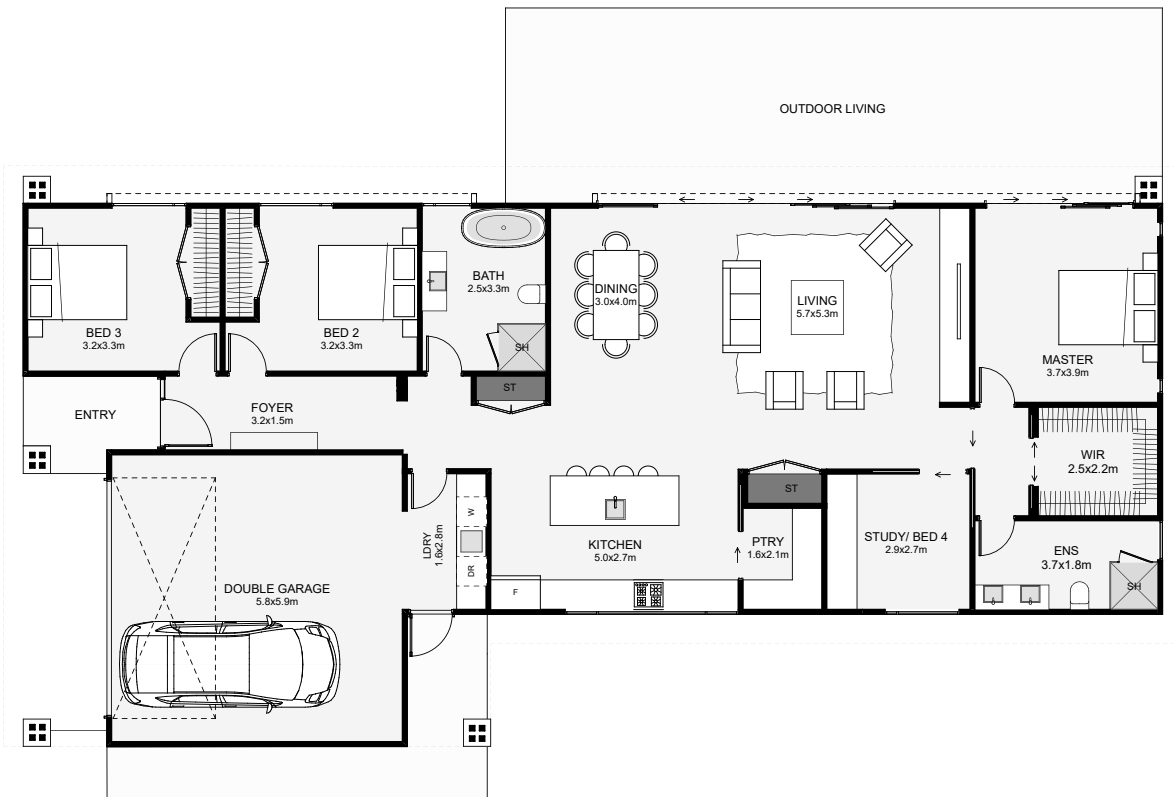




This modern home is all about the outlook! The interior layout of this home is directed towards the northern perspective and making the most of the sun and view. A fourth room can be used as a study with a slider directly off the living or turned into a bedroom with access off the hallway, depending on your needs. The overall width of this home is lean, so even skinny sites will work with this home. If you're looking for a modern, flexible design, this could be your ticket!



Floor Area: 197m<sup>2</sup>

2   
 4   
 2   
 1   
 23.0m    11.5m

Contact us:

m: 027 408 7217

e: glenn@gwb.co.nz

www.gwb.co.nz

